



Cabinet Systems

Doors / Overlay Options

Cabinetmaker's Choice, LLC (r-1169)
P.O.Box729
Newtown, CT 06470-0729

Neil Ratner - Phone: (203) 426-3247 Fax: (203) 270-9994 Email: sales1@cabinetmakerschoice.com

Chad Witwer - Phone: (717) 823-6204 Fax: (717) 427-1743 Email: sales2@cabinetmakerschoice.com

Jim Gamache - Phone: (203) 678-3015 Fax: (203) 702-5104 Email: sales3@cabinetmakerschoice.com

www.cabinetmakerschoice.com

DOORS / OVERLAY OPTIONS

Custom Products

© 2009 Conestoga Wood Specialties Corporation. All the information contained herein is thought to be accurate at the time of printing. However, no responsibility is assumed by Conestoga Wood Specialties Corporation. All rights reserved. Reproduction of any part of this publication without the express written permission of Conestoga Wood Specialties Corporation is a violation of applicable laws. Order forms may be reproduced without notice to Conestoga Wood Specialties Corporation provided they are used to order Conestoga Wood Specialties Corporation products. All prices and specifications are subject to change without notice. All pictures and graphics are for visual representation only. This publication supersedes all prior technical, policy and price data.



Program Door and Drawer Front Specifications

The following specifications are for CRP-10 and TW-10 program doors, and 3/4" thick slab and 1" thick #10 program drawer fronts. These designs receive modified material pricing as a benefit to customers who order complete Cabinet Systems. For additional information on material specifications, lead-times and pricing for these designs, refer to the appropriate tabs in this manual.

- CRP-10 doors, slab and #10 drawer front designs are available in four wood species: Cherry, Hard Maple, Red Oak and Soft Maple.
- TW-10 doors have a 1/4" veneer panel. Available in Cherry, Hard Maple or Red Oak only. (Cherry and Red Oak have a standard grade panel with value grade framing).
- 3/4" slant raise is standard on CRP-10 doors.
- Regular bead is standard on all program doors.
- Eight edge profiles available: C-2, E-2, ME, LC-2, PRS-2, FP, B-2 and C. PRS-2, LC-2, B-2 and ME can accept concealed hinge boring.
- Cabinet Systems program doors and drawer fronts purchased separately from Cabinet Systems must be ordered and priced as custom. These designs will be subject to custom lead-times.
- 1/4", 1/2", 1-1/4" and 1-3/8" overlays available in all species.
- When 1-1/4" or 1-3/8" overlay is ordered, extended stiles or loose filler strips may be required in applications where cabinets are installed next to a wall or tall cabinets. The necessity for extended stiles or loose filler strips is determined by the type of hinge used. Corner cabinets may require special hinging.
- Two panel doors have the option of different styles on the same door. If not specified, both panels will match the base cabinet doors, except on tall cabinets where the top door is a two panel door. In these instances, the top panel will match the designs on wall cabinets.
- Available options for Cabinet Systems program doors include finishing, cross grain removal sanding and drilling for concealed hinges. Refer to the Custom Product Manual for pricing and specification details.
- All butt door cabinet doors receive an edge profile on all four sides and have a 1/8" gap between doors. Butt doors with a C edge profile are paired and lipped on three sides with a C-2 profile on the fourth side.
- See diagrams in this section for overlay reveal specifications.

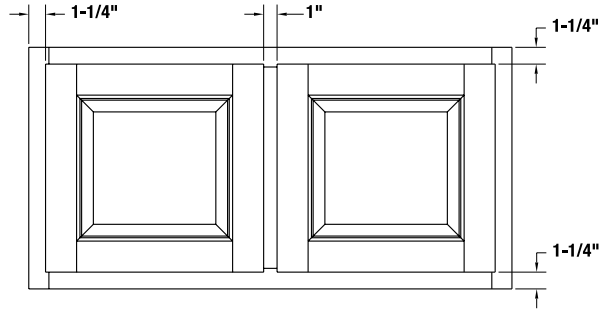


Overlay Diagrams

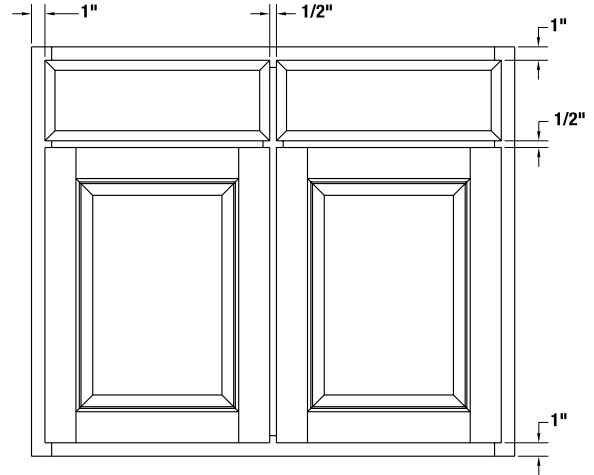
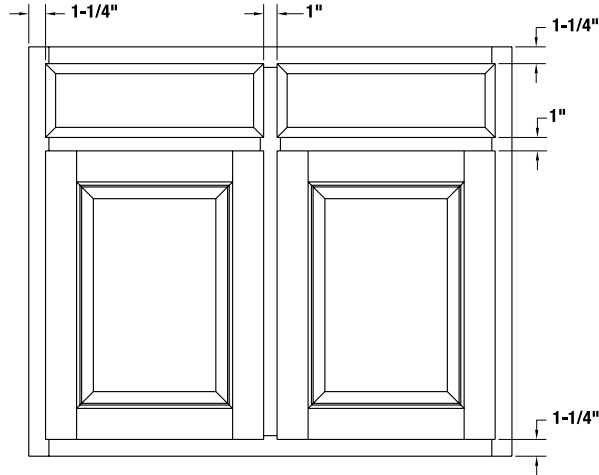
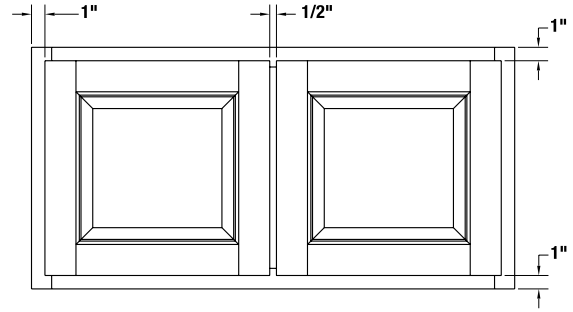
DOORS / OVERLAY OPTIONS

Cabinet Systems

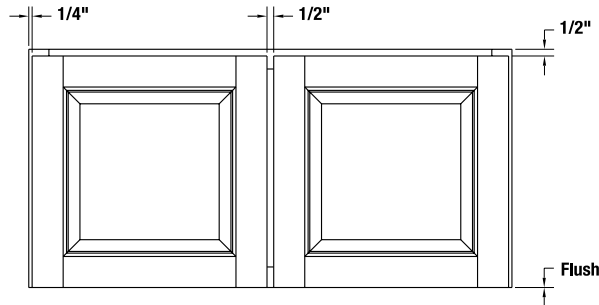
1/4" Overlay



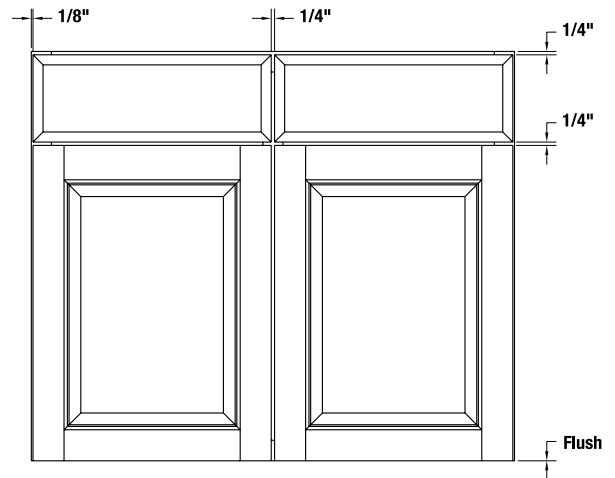
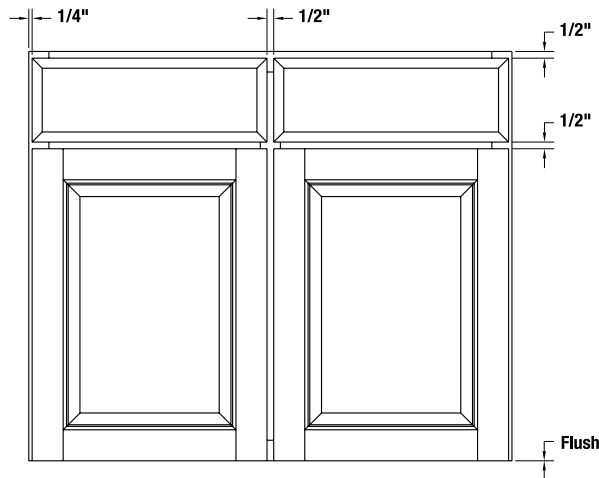
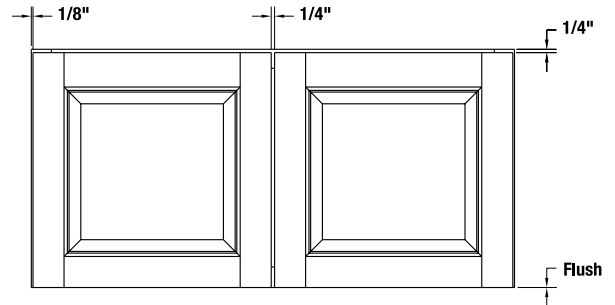
1/2" Overlay



1-1/4" Overlay



1-3/8" Overlay

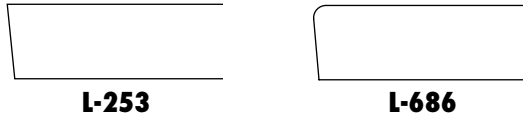




Inset Door and Drawer Information

- Inset doors are not subject to program door pricing and will be priced as custom doors.
- The following edge profile options are recommended for use with inset doors and drawer fronts.
- These edges have a 5 degree back bevel edge to ensure sufficient door clearance. Machine edge is available upon request at no additional upcharge.

Standard Lip Options



- Front frames ordered with inset doors and drawer fronts will be pre-fit to the opening size. A 3/32" margin will be used on all sides for single doors and drawer fronts and between butt door pairs.

Design Exceptions

- The following door and drawer front styles are not available for inset applications due to their unique design characteristics: Astoria, CRP-1420, CRP-10191, CRP-10318, CRP-10334, CRP-10827, CRP-10875, CRP-10946, DVG Batten, Fairhaven, Flush Batten, Gainsborough, LaSalle, Milan, Prestige, Royal, Savoy, TW-10318, TW-10827, 10946, V-200 and Windham.
 - * Recessed panel doors and drawer fronts in the above designs are not available for inset applications.
- The following edge profile options are not available for inset applications: B, B-2, C, C-2, CFP-2, E-2, FEP, FP, H, H-2, J-2, L-034, L-059, L-061, L-120, L-281, L-772, L-803, LC-2, PRS-2, RC-2 and V-2.
- Openings with trimmable inserts are not available beaded.
- Inset doors and drawer fronts are not available in MDF products.
- Inset and beaded front frames that are ordered with Colourtones and glazes will receive the same hand glazed finishes as doors. Cabinet Systems parts that are ordered with Colourtones and glazes will continue to be finished with the special Colourtones that have been tinted to match the Colourtones and glaze combination. They will not receive a hand rubbed glaze. Some options, such as Heirloom and Brushed glazes that are available on inset and beaded front frames are not available on Cabinet Systems parts.

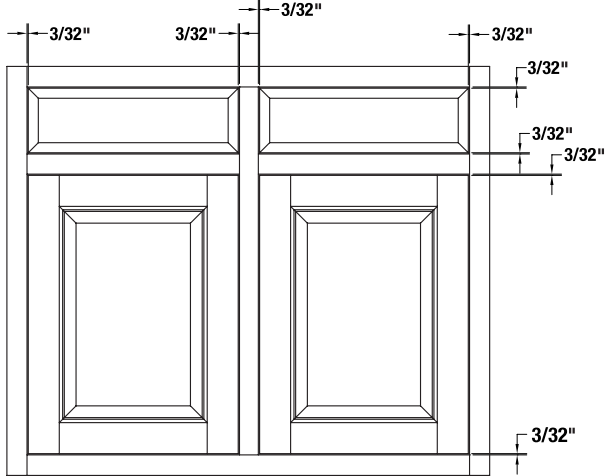
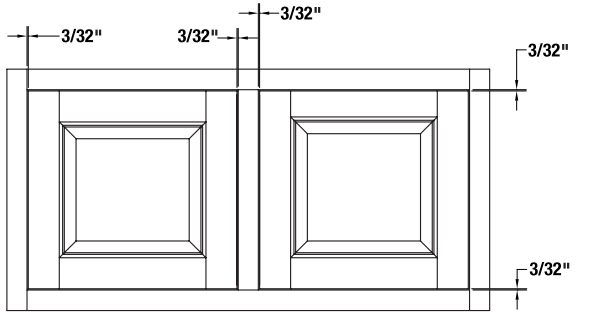
Miter/Inset Combination Not Recommended

Miter doors and drawer fronts are not recommended for inset applications for the following reasons:

- **Miter lines may not intersect door corner after pre-fit sanding.** Not considered a defect by Conestoga, this condition may not be visually pleasing to some customers.
- **Panel expansion caused by high humidity may cause miter doors to bind inside frame openings.** Although Conestoga's miter door joint construction is one of the industry's most durable, high humidity will cause panel expansion. The resulting pressure can push the mitered door framing outward against the frame openings.
- If a miter design is necessary, Conestoga recommends specifying a plywood or MDF center panel. See applicable specifications in the Custom Products Manual for further information.
- For complete inset and beaded front frame information see the Specialty Products section in the Custom Product Manual.



Inset Door Diagram

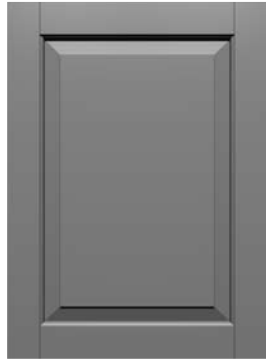


DOORS / OVERLAY OPTIONS

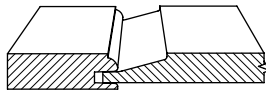
Cabinet Systems



Program Door and Drawer Front Designs



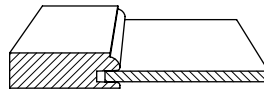
CRP-10



\$11.25-B
7-1/2" x 7-1/2"
Slant raise standard



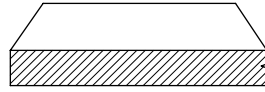
TW-10



\$9.40-A
7" x 5"
1/4" Veneered Panel



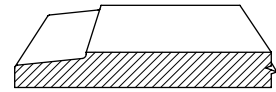
Slab



\$4.55-B
1-1/2" x 2-1/2"
3/4" or 1"



#10



\$4.80-B
3" x 3"
To match slant raise
3/4" or 1" slab

Unless specified otherwise, framing width on all designs is 2-5/16" measured across the back of the framing. Profile cross section for reference only. Minimums listed are based on raise shown. Minimums will vary depending on the overlay and cabinet width selection.

Program Bead and Raise Profiles

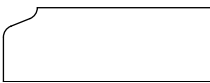


Regular Bead

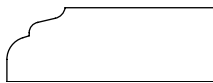


Slant Raise

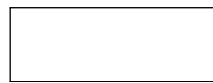
Program Edge Profile Options



C-2



E-2



Machine Edge*



LC-2*



PRS-2*



FP
3/4" thick only



B-2*



C
3/4" thick only
Rabbit: 7/16" deep
3/8" high

*Drilling for concealed hinges is available on doors with these profiles.



Pricing Procedure for Doors and Drawer Fronts

The price for any program or custom door or drawer front can be easily calculated by inserting the relevant numbers into the chart below. A brief explanation and/or a page number for reference is given for each required number. An example is shown.

Example — 1 CRP-10 with radius corners in Premium Hard Maple, 1" thick, 15" x 25"
 $(\$11.25 + \$2.60) + (\$13.85 \times 1.30 \times 1.35 \times 2.60) = \$77.05 \times 0.95 = \$73.20$



CRP-10
\$11.25-B
7-1/2" x 7-1/2"

Design Charge
See CRP-10 door in Wood Doors/Drawer Fronts section under raised panel listing in the Custom Product Manual.

Total Design Charge

Design Charges + Design Options

Design Options

Refer to Options on Offering and Availability chart and Design Options section in the Custom Product Manual.

plus

Total Material Charge

Material Charge X **One Inch Upcharge (30%)** X **Premium Material Upcharge (35%)** X **Square Footage**

One Inch Thick Upcharge (30% doors, 20% drawer fronts)

See Material Pricing Guide in the Custom Product Manual. These optional charges will be incurred only if specifying 1" thick product rather than our standard 3/4" thickness.

Material Charge

See Material Pricing Guide (as shown below) in the Custom Product Manual. Prices are per sq. ft. Door minimum: 1 sq. ft. Drawer fronts: none.

Square Footage

Calculate the square footage of the item being ordered. Multiply the length by the width, in inches, and divide the result by 144.

equals

Species	Premium Grade Availability	Standard Grade Pricing Material Category			Radius Factor (for radius pricing)
		A	B	C	
Alder		\$9.75	\$13.65	\$16.10	+5%
Bamboo		Not Available	18.75	22.50	Not Available
Birch, Red		12.70	15.00		
Birch, White	x	8.45			
Cherry	x				
Lepros® (Eucalyptus)					
Maple, Hard					

Total List Price

X

Cost Multiplier

Premium Material Upcharge (35%)

See Material Pricing Guide in the Custom Products Manual. This optional 35% charge will be incurred only if specifying our Premium grade wood, rather than our Standard grade.

equals

Total Charge after discount

Cost Multiplier

List price minus trade discount.

Product Design Choices

All Conestoga's prices include choice of edge profile, framing bead and panel raise. However, L-297, L-304 and LC-Insert edge profiles incur an extra charge. For complete details on our options and associated prices, see Design Options section of the Custom Product Manual.

Before pricing a door or drawer front, verify the availability of the desired options on the design by referring to the Offering and Availability page found immediately after each door design page.

Multiple panel doors have design charges equivalent to the number of panels ordered. As an example, a CRP-10 with three panels uses the design charge of $\$11.25 \times 3 = \33.75 . This policy excludes doors that come standard with multiple panels (i.e. CRP-10102). Due to construction complexity, all multiple panel mitered doors include an additional charge of \$39.00 per upright or middle rail plus the per-panel design charge.